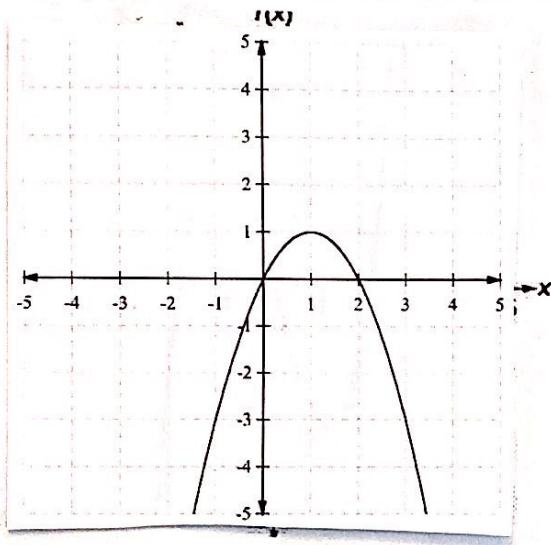


Key Features & Transformations of Functions Quiz REVIEW

Name: _____

Identify the key features of the function below:

1.



Domain:	_____
Range:	_____
Increasing:	_____
Decreasing:	_____
Positive:	_____
Negative:	_____
Maximum:	_____ Relative Absolute
Minimum:	_____ Relative Absolute
X-intercept(s):	_____
Is the graph a function?	YES or NO

State which way the graph shifted after the translation from the parent graph.

2. $y = -3|x - 2|$

Transformation: _____

3. $y = \frac{1}{4}\sqrt[3]{x + 1} + 7$

Transformation: _____